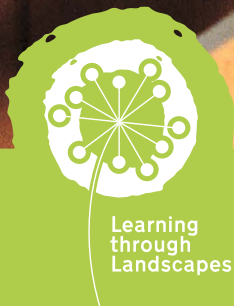




Design & Technology  
All ages

# Make a wood cookie spinning top

- Using tools safely to create a spinning top



Learning  
through  
Landscapes

## Overview

- Using tools such as knives and hand drills adds a level of risk beyond normal class activities. Completing this activity requires competency and confidence in the leader; experience and trust of the group built over time; enough supervision; and a [risk benefit assessment](#). Depending on the age of your pupils, you may want to complete some of the steps ahead of time.

## Equipment

- Branch (ideally around 6–8 cm diameter)
- Thin stick (around 1 cm in diameter)
- Saw
- Palm drill or hand drill
- Knife
- Pens or paint for decoration

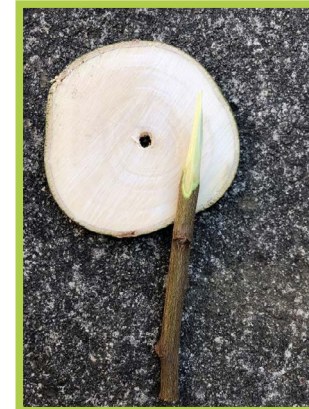
## Activity

Please note all measurements are suggestions. Ensure that safety rules are followed at all times, and always demonstrate correct usage of tools to new learners.

1. Use the saw to cut a thin wood cookie (wood slice) from your branch. Less than 0.5 cm wide is ideal.
2. Drill a hole through the centre of the wood cookie.
3. Cut your thin stick into a straight piece around 8–10 cm long, and use the knife to create a point at one end, making sure it's narrow enough to push through the hole at the centre of the wood cookie.
4. Decorate the wood cookie using pens or paint.
5. Push the stick through the centre until it is wedged into place securely.
6. Have fun playing with the spinning top!

## Further activities

1. Experiment with different sizes of wood cookies and sticks to see which works best and why.
2. Use this activity to investigate colour, shapes, and patterns with your pupils. What happens to them when pupils spin the spinning tops?
3. Add numbers around the outside of the wood cookie and use it as a spinner for a game.



Photographs courtesy of Fiona MacNab.

If you would like to develop your outdoor learning knowledge and skills, take a look at our range of training courses: [ltl.org.uk/outdoor-learning-training](http://ltl.org.uk/outdoor-learning-training)