



Learning through Landscapes

Pollinator Identification Guide



About the Pollinator Identification Guide

Welcome to the Pollinator ID Guide, to be used with the Pollinator and Flowering Plants survey. ID Guides help us identify species by giving us information on size, shape, colour and anatomy. Look closely at an insect (you may want to use a magnifying glass or hand lens), and compare it to groups listed below; can you identify it? If not, take a picture of the insect and use the internet to identify it later!

Butterflies and Moths

Butterflies

Lepidoptera



Clubbed antennae
Butterflies rest with their wings closed vertically over their body
Various sizes

Moths

Lepidoptera



Most species have feathered antennae
Most moths rest with their wings open
Various sizes

Funders and partner organisations

Green Recovery Challenge Fund



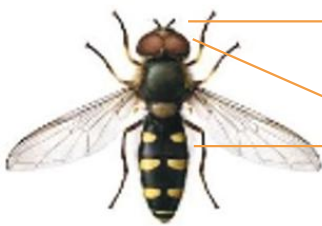
The National Lottery Heritage Fund



Flies

Hoverflies

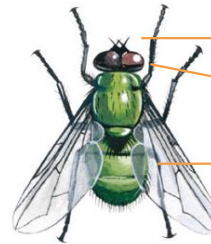
Diptera



Short club-like antennae
Large eyes
Striped body
Hovers or darts in flight, various sizes

Other flies

Diptera

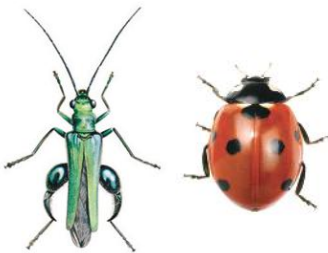


Short antennae
Large eyes
One pair of see-through wings
Various sizes

Beetles

Beetles

Coleoptera

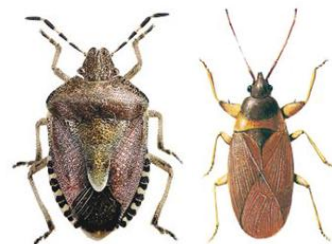


Hard outer wing cases (elytra), meet in the middle forming a T shape
Various sizes

True Bugs

True Bugs

Hemiptera



Wing cases usually meet in an X- or Y-shape
Various sizes

Bees and Wasps

Bumblebees

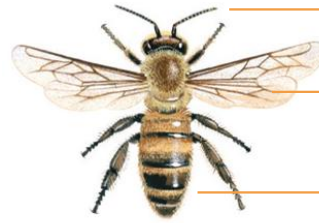
Hymenoptera



- Long antennae
- Two pairs of see-through wings
- Round furry body, 8–30mm

Honeybees

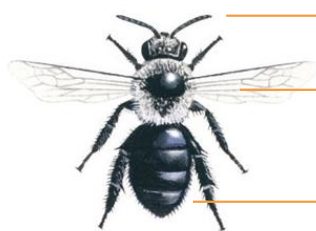
Hymenoptera



- Long antennae
- Two pairs of see-through wings
- Striped ginger brown body, 5–15mm

Solitary bees

Hymenoptera



- Long antennae
- Two pairs of see-through wings
- Narrower body than bumblebee, 3–15mm

Wasps

Hymenoptera



- Long antennae
- Two pairs of see-through wings
- Narrow waist
- Bare body with various patterns of black and yellow

With thanks to OPAL and the Natural History Museum for sharing images.



Pollinator Identification Guide

Learning through Landscapes

© This guide was created by the Learning through Landscapes Trust. Registered charity no. in England and Wales 803270 and in Scotland SCO38890