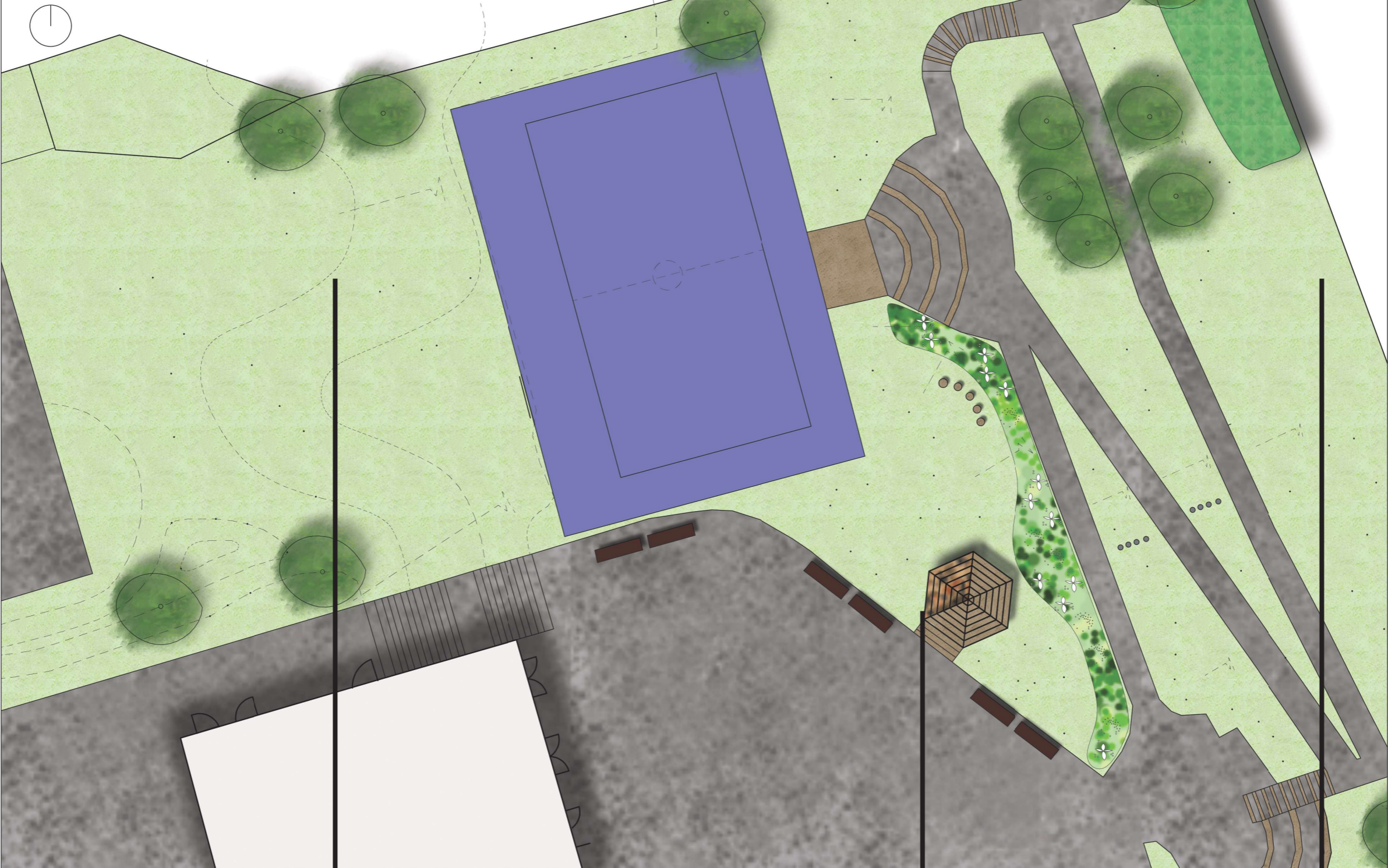


Shakespeare Primary, Leeds
Back to School Project
Peoples Post Code Lottery
TCV/ LtL
Existing landscape layout
Scale 1:100 @A2



Existing Landscape Layout

A busy playground used by year 5 and 6 on a sloped open and sunny site.

Site 1 - 'the Greenspace' - separating the year 3 and 4 area from the year 5 and 6 yard, this space is gently sloping. The muga pitch sits level with the top edge of the banking and to the north if a large carpark space.

Site 2 - the Outdoor classroom - a brand new addition to the playground near to an area of very high footfall. A good area with group seating, shade and protection from the weather and a surface drain at the junction with the steps and the tarmac playground surface.

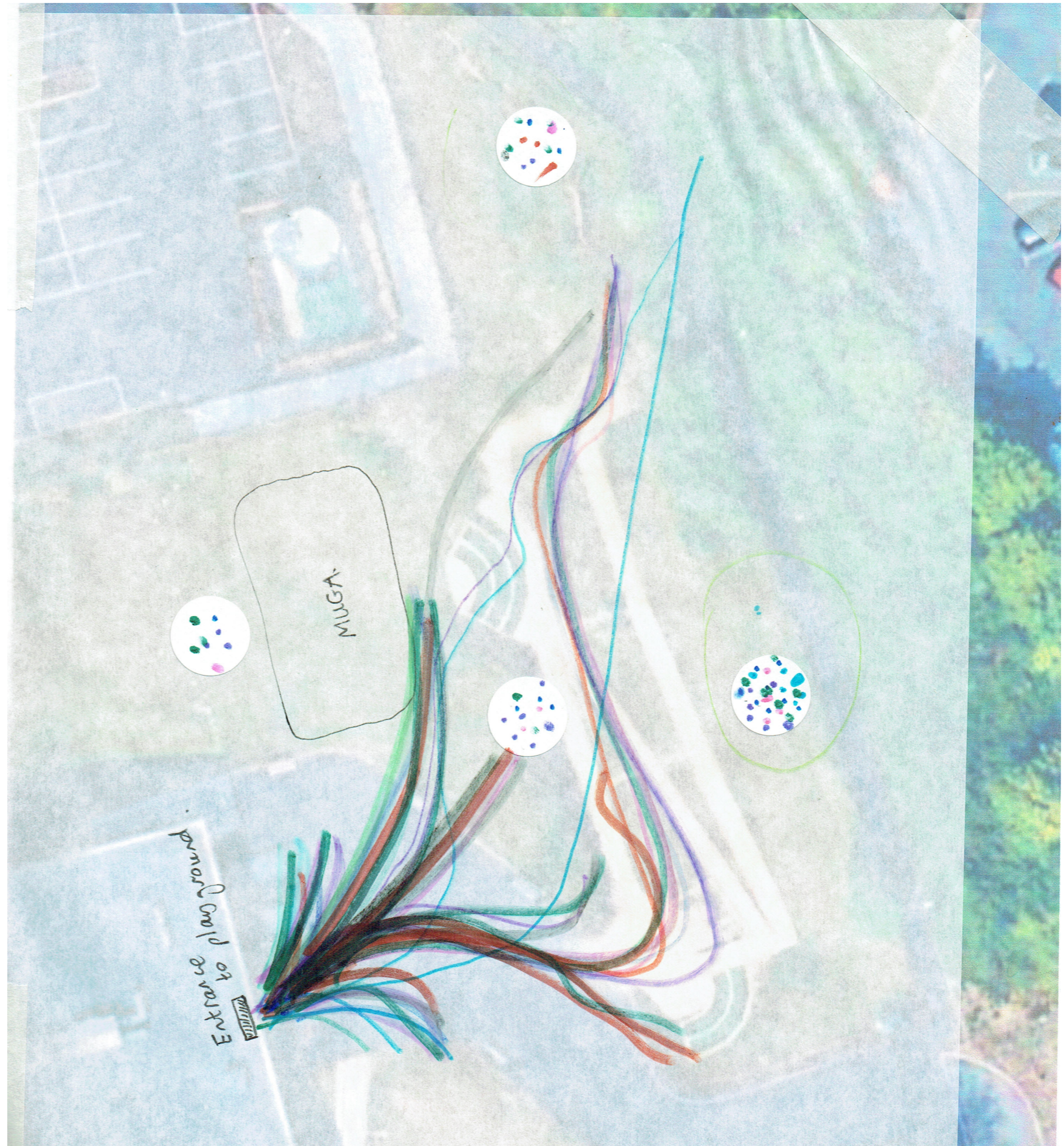
Site 3 - the Banking - the highest point of the site, against the fence line of the school. Beyond the fence is a public footpath and from here great views of the sky and across the city can be seen. Steep access up hill, and the children are only allowed here in dry weather. Mown grass all around and up to the group of young trees planted at the top of the slope.

Back to School Project - People's Postcode Lottery Consulting with the children

Working with Y6 representatives, who then worked back with as many of the whole year 6 class cohort as possible, this consolidated map was drawn out. It shows the routes the children freely move along most naturally across the space currently and the dots represent their ideas of where the new areas for reflection, rest and relaxation could be.

We used huge venn diagrams drawn out over the playground space, and a photo mapping exercise to help the children consider what a new space may or may not have and they considered what to include and what to disregard.

From their comments and feedback and from talking with the head to include a previously un used space the following proposal has been put together.





Shakespeare Primary, Leeds
 Back to School Project
 Peoples Post Code Lottery
 TCV/ LtL
 Proposed landscape layout
 Scale 1:100 @A2

Proposed Landscape Layout

Following consultation with Y6 considering, routes of travel, favourite spaces and and preferred content of areas with a focus for relaxation and rest during the school day, the following 3 ares have been identified.

Site 1 - 'the Greenspace' - Currently out of bounds to the children, but a large sloped area where the proposal sees timber planters creating a productive low maintenance fruiting garden with timber and cargo netted 'hammock style' seating along with nook timber seating between planters. Partially open to view from 3/4 space and partially obscured. Apple trees to cast shade and from the pathway upslope and beyond the school by the hospital, the rainbow of planting will be visible. Shrub planting separates the quiet space from the busy and energetic MUGA pitch, the composition of planting mimicing the planting already within the 5/6 yard.

Site 2 - the Outdoor classroom - the proposal sees rain water collection added, and fragrant climbers planted around the perimeter.

Site 3 - the Banking - a new steeping log/stone access is added in the proposal along with a third timber and cargo netted hammock style seat. Fragrant evergreen climbers form a backdrop from the public footpath beyond the school grounds, and native wild flower plug and bulb planting into the existing grass add colour and wildlife to the area for observation. The 'wooded' space adjacent is worked in to create habitat piles and honey-suckle planted to scramble through the trees.

Back to School Project - People's Postcode Lottery Precedent images - ideas of how it could look.

Using a very simple material palette, and having awareness of what is currently in place in the school outdoor environment will blend these new spaces together and add to the beautiful and functional offer of the school.

Chunky tanalised timbers (new not reclaimed timber) will be used for the planted beds, as well as the frames of all the seating.

A combination of wild planting interventions on the banking, shrub planting adjacent to the MUGA, fragrant planting around the outdoor classroom and productive growing planting in the Greenspace will offer variety and interest for the children, staff and wider community by a like.

The planting in the productive Greenspace will be by block colour. From afar this planting should resonate with the Rainbow symbol, which came to represent the gratitude and love for all key workers and the NHS staff during the COvid 19 pandemic. Given the site location next to St James hospital, and the community of parents forming this schools' wider family it is hoped that this will be a lasting reminder of the times we have lived through and the impact of this time on the learning, growth and development of these Y6 children in particular.

